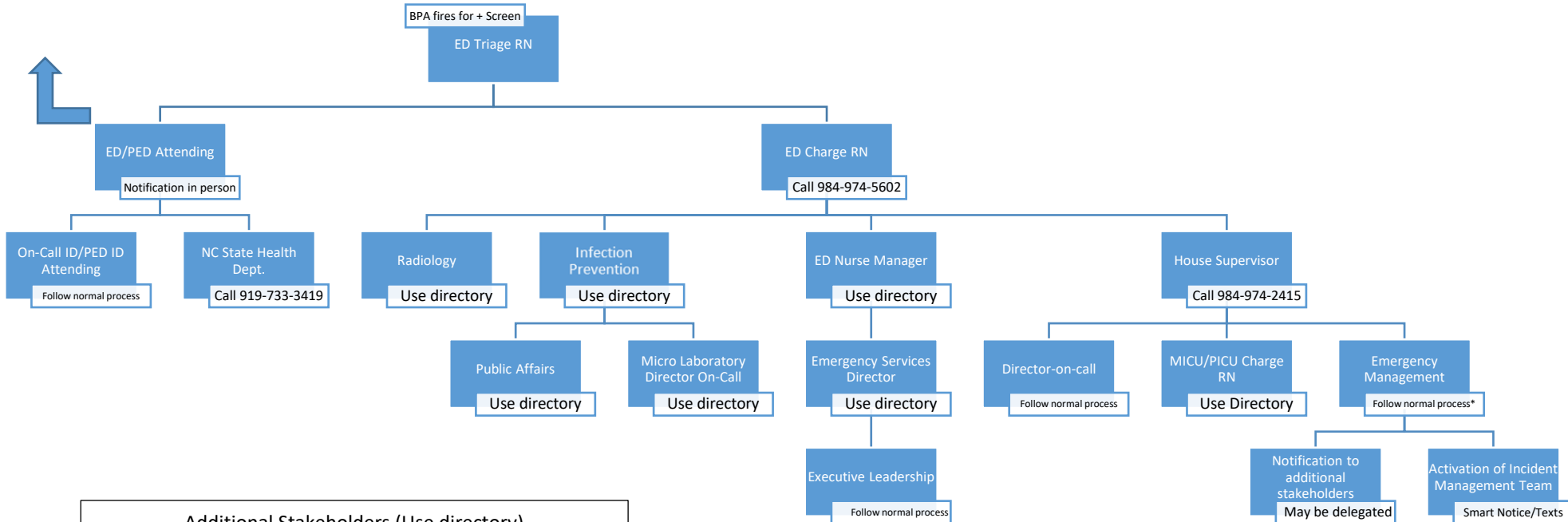


High Consequence Pathogen 24/7 Notification Pathway - ED

Date Effective: June 2022

If notification is received from the PLC or Local Health Department, the **ED/PED Attending** will also provide notification to Infection Prevention and the ED Charge RN



Additional Stakeholders (Use directory)

- MICU Attending Physician
- MICU RN Manager
- PICU Attending Physician
- PICU RN Manager
- Patient Logistics Director
- MAO
- Respiratory Therapy Manager on Call
- Environmental Services
- ECMO Program Manager
- CD Director
- Carolina AirCare SOC via Flightwatch
- Dialysis Manager