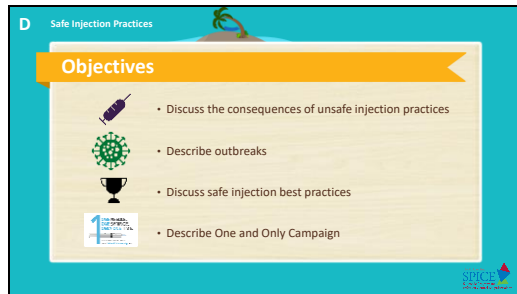


Slide 1



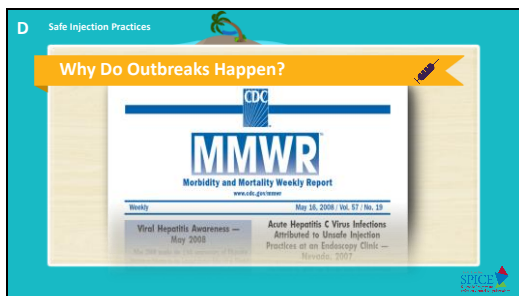
Slide 2



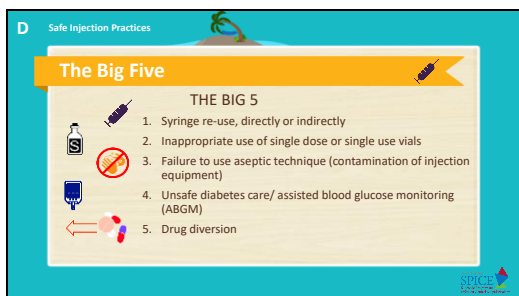
Slide 3



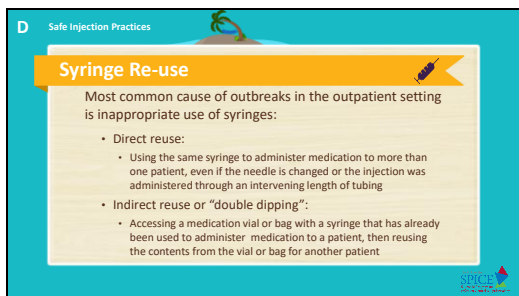
Slide 7



Slide 8



Slide 9




Slide 13

D Safe Injection Practices

Inappropriate Use of Single-dose/Single-use Vials

- Vials labeled as single use:
 - **NO PRESERVATIVE**
 - Can be accessed one time only and for one patient only and remaining contents must be discarded
- CDC is aware of at least 19 outbreaks involving single dose vial use
 - All occurred in outpatient setting with almost half in pain remediation clinics




Slide 14

D Safe Injection Practices

Single Dose Vials: CDC Position Statement, 2012

- Vials labeled by the manufacturer as "single dose" or "single use" should only be used for a single patient
- Ongoing outbreaks provide ample evidence that inappropriate use of single-dose/single-use vials causes patient harm.
- Leftover parenteral medications should never be pooled for later administration
 - In times of critical need, contents from unopened single dose vials can be repackaged for multiple patients in accordance with standards in United States Pharmacopoeia General Chapter <797>

www.cdc.gov/injectionsafety/CDCposition-SingleUseVial.html




Slide 15

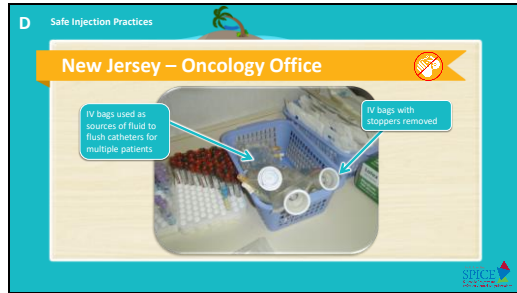
D Safe Injection Practices

When Failure To Use Aseptic Technique Happens!

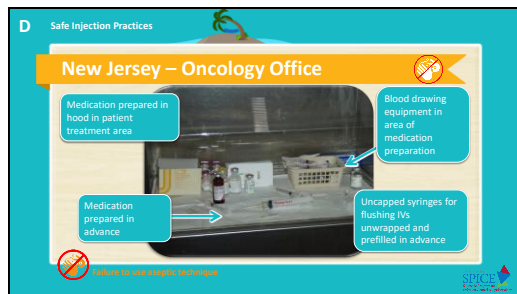
- Two women diagnosed with HBV infection, receiving chemotherapy at the same physician practice
- Multidisciplinary team investigation
- Office closed; physician license suspended
- 2,700 patients notified
- 29 outbreak-associated cases of HBV



Slide 16



Slide 17



Slide 18



Slide 19

D Safe Injection Practices

Knowledge Check

Which of the following statements is false?

- A. Syringes can be used on more than one patient if the needle is changed.
- B. Single dose vials can be used more than one time if it has not been contaminated
- C. Blood glucose meters do not have contact with patients and do not need to be cleaned
- D. If there is no visible blood the syringe is safe to reuse.
- ✓ E. All the above

SPICE
Safely Practice Infection Control and Epidemiology

Slide 20

D Safe Injection Practices

Unsafe Diabetes Care

Sharing of blood glucose meters without cleaning and disinfection between uses

Use of fingerstick devices or insulin pens on multiple persons

Failure to perform hand hygiene or change gloves between procedures

Parul et al. ICHE 2009; 30:209-14, Thompson et al. JAGS 2010; MMWR 2005; 54:220-3

SPICE
Safely Practice Infection Control and Epidemiology

Slide 21

D Safe Injection Practices

Drug Diversion

5. Drug diversion

- Substandard care delivered by an impaired provider
- Denial of essential pain medication or therapy
- Risks of infection
 - Bloodborne pathogen
 - Bacterial contaminants

SPICE
Safely Practice Infection Control and Epidemiology


Slide 25

D Safe Injection Practices

Safe Injections: Best Practices

Drug Diversion

- Institute drug diversion monitoring systems and security measure to assist in averting and/or identifying diversion activity.

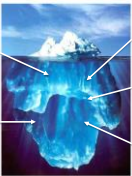


SPICE
Safe Injection Practices
Center for Infection Control and Epidemiology

Slide 26

D Safe Injection Practices

Most Outbreaks are Never Detected



- Asymptomatic infection
- Long incubation period; difficult to identify single healthcare exposure
- Under-reporting of cases
- Under-recognition of healthcare as risk
- Barriers to investigation, resource constraints

SPICE
Safe Injection Practices
Center for Infection Control and Epidemiology

Slide 27

D Safe Injection Practices

Survey of Physician and nurse Practices around injection safety

- 370 Physicians
- 320 Nurses
- Eight States Included
 - NC, NY, NJ, Nevada, Colorado, Tennessee, Wisconsin, Montana
- Types of healthcare settings:
 - Acute care, long term care, outpatient settings

<https://www.sciencedirect.com/science/article/pii/S0196655317306806?via=ihub>

SPICE
Safe Injection Practices
Center for Infection Control and Epidemiology

Slide 28

D Survey findings

Topic	Physician Response	Nurse Response
Reuse of syringe for > one patient	12.4%	3.4%
Reentering a vial with a used needle/syringe	12.7%	6.7%
Using SDVs for multiple patients	34%	16.9%
Using source bags as diluent for multiple patients	28.9%	13.1%

Slide 29

D Safe Injection Practices Knowledge Check

True or False?

Because there have been so many outbreaks, ALL healthcare providers do the right thing every time with safe injection practices.


True False

Slide 30

D Safe Injection Practices Best Practice

Knowledge → Prevention

- Designate someone to provide ongoing oversight
- Develop written infection control policies
- Provide training
- Conduct quality assurance assessments



Slide 31



Slide 32



Slide 33